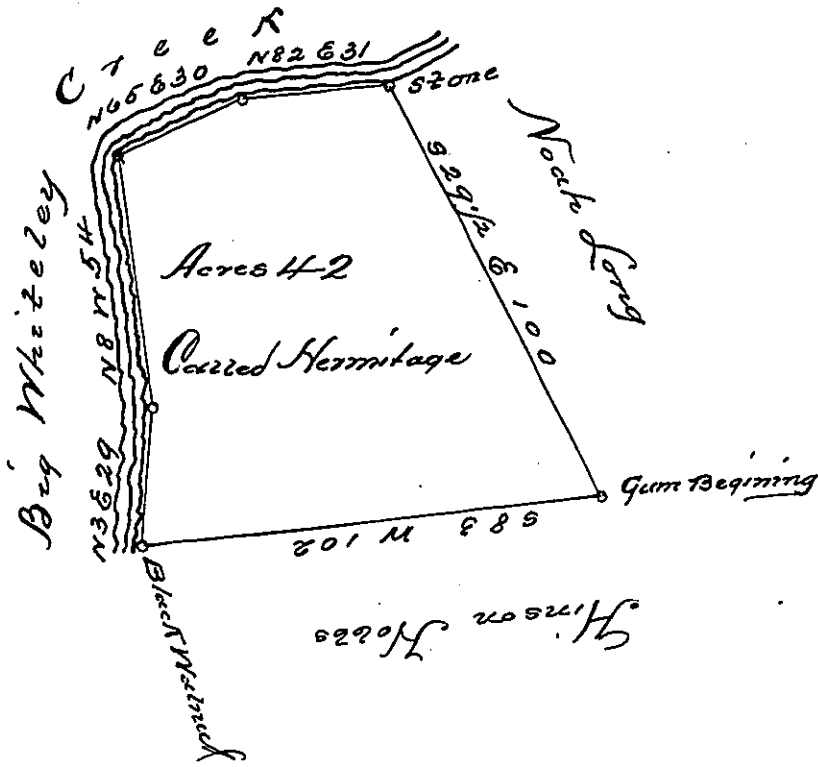


29
54
30
31
Total 144-705



A Draught of a survey Situate on the Waters of Bigg Whiteley
Creek in Washington County, Carried Hermitage Containing
Forty two acres & the allowance of six for Creek. Surveyed June
^{the} 24 day 1788. In pursuance of a warrant Granted to Thomas
Clare ^{the} January 21 day 1788.

To John Lukens Esq. S. G.
State of Pennsylvania

Jno. Hoge D. J.

IN TESTIMONY that the above is a copy of the original remaining on file in
the Department of Internal Affairs of Pennsylvania, made
conformably to an Act of Assembly approved the 16th day of
February, 1833, I have hereunto set my Hand and caused
the Seal of said Department to be affixed at Harrisburg,
this third day of December, 1901,

James W. Latta
Secretary of Internal Affairs.